

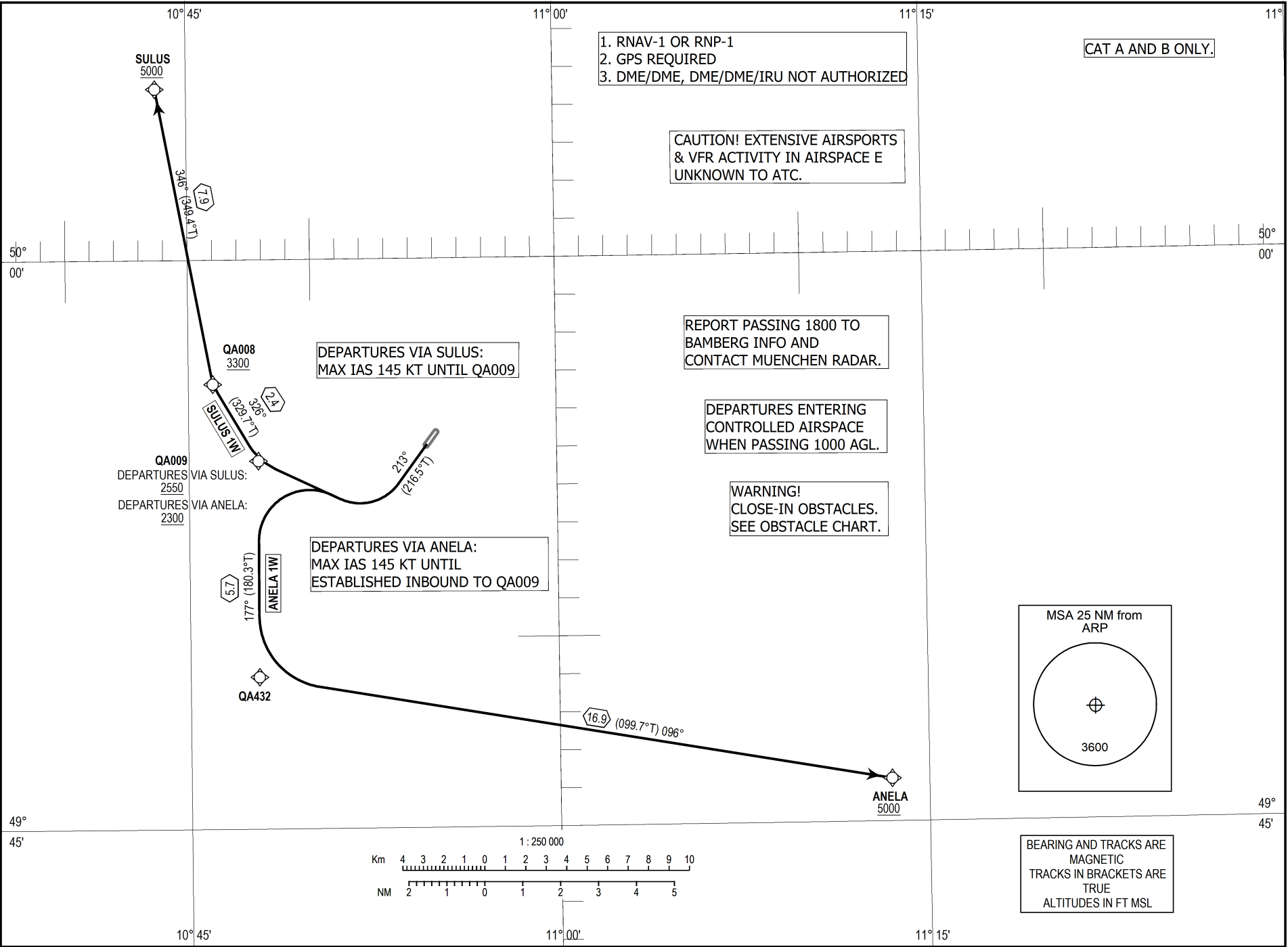
BAMBERG-BREITENAU  
RWY 21  
ANELA 1W SULUS 1W

BAMBERG ATIS	124.130
BAMBERG INFO	123.440
MUENCHEN RADAR	129.525

TRANSITION  
ALTITUDE 5000  
VAR 3° E

LUFTFAHRTHANDBUCH DEUTSCHLAND  
AIP GERMANY  
STANDARD DEPARTURE  
CHART - INSTRUMENT  
RNAV (GPS)

Correction: Communications.



1. RNAV-1 OR RNP-1  
2. GPS REQUIRED  
3. DME/DME, DME/DME/IRU NOT AUTHORIZED

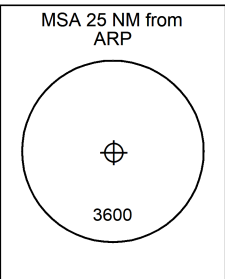
CAT A AND B ONLY.

CAUTION! EXTENSIVE AIRSPORTS  
& VFR ACTIVITY IN AIRSPACE E  
UNKNOWN TO ATC.

REPORT PASSING 1800 TO  
BAMBERG INFO AND  
CONTACT MUENCHEN RADAR.

DEPARTURES ENTERING  
CONTROLLED AIRSPACE  
WHEN PASSING 1000 AGL.

WARNING!  
CLOSE-IN OBSTACLES.  
SEE OBSTACLE CHART.



BEARING AND TRACKS ARE  
MAGNETIC  
TRACKS IN BRACKETS ARE  
TRUE  
ALTITUDES IN FT MSL

DEPARTURES VIA SULUS:  
MAX IAS 145 KT UNTIL QA009

DEPARTURES VIA ANELA:  
MAX IAS 145 KT UNTIL  
ESTABLISHED INBOUND TO QA009

QA008  
3300  
SULUS 1W  
(329.7°T)  
376°  
2.2

QA009  
DEPARTURES VIA SULUS:  
2550  
DEPARTURES VIA ANELA:  
2300

